

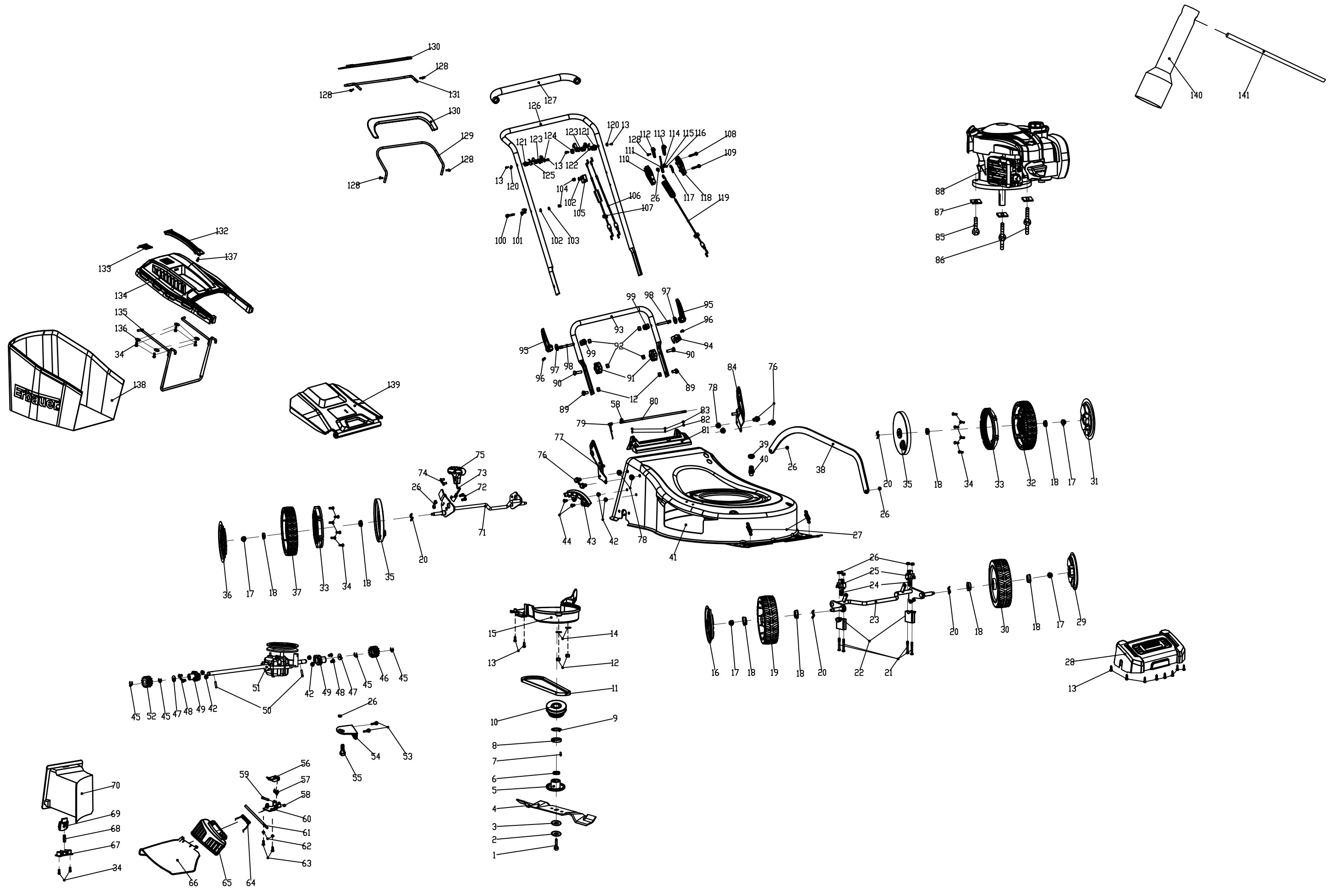


51CM SP LAWN MOWER

Model Number

ELMP170SP51

Parts Manual



Parts List

ID No	AA Code	MPN	Description	Qty
1	A26800606201	A26800606201	BLADE FASTENING BOLT	1
2	2105300001C	2105300001C	DISH WASHER	1
3	GP0000001372	2105200245A	FRICTION TOOL HOLDER PRESSURE PLATE	1
4	GP0000001373	21052003482000A	BLADE	1
5	GP0000001374	2105500005A	STAMPING TOOL HOLDER	1
6	GP0000001375	2105400044A	TOOL HOLDER BUSH	1
7	GP0000001376	2103900022A	HALF ROUND KEY	1
8	GP0000001377	A26800708101	WAVE WASHERS	1
9	GP0000001378	2102300127A	ACTIVE PULLEY	1
10	GP0000001379	2102200038A	WHEEL WASHERS	1
11	GP0000001380	2102600049A	V-BELTS	1
12	3031309002	3031309002	HEXAGON LOCK NUT	4
13	GP0000001381	3011301006	SELF-TAPPING SCREWS	14
14	GP0000001382	3051303001	FLAT WASHERS	2
15	GP0000001383	21041001920001B	BELT PROTECTION COVER	1
16	GP0000001384	21011005580001A	7 INCH RIGHT WHEEL COVER	1
17	GP0000001385	3032302003	HEXAGON FLANGE NUT	4
18	2101300065A	2101300065A	ANGULAR BEARING	8
19	GP0000001386	21011005563246A	7 INCH RIGHT WHEEL ASSEMBLY	1
20	A26800706202	A26800706202	WAVE WASHERS	4
21	GP0000001387	3091308003	HEXAGON FLANGE BOLTS	4
22	GP0000001388	21011005550001A	AXLE LOWER SEAT	2
23	GP0000001389	2101300183A	FRONT AXLE ASSEMBLY	1
24	GP0000001390	2101800009A	DAMPING SPRING	2
25	GP0000001391	21011005540001A	AXLE UPPER SEAT	2
26	3031309003	3031309003	HEXAGON LOCK NUT	10
27	GP0000001392	2109800053C	FRONT AXLE TENSION SPRING	2
28	GP0000001393	21031003494155A	HEAD MASK	1
29	GP0000001394	21011005490001A	7 INCH REVOLVER COVER	1
30	GP0000001395	21011005463246A	7 INCH REVOLVER ASSEMBLY	1
31	GP0000001396	21011005500001A	10 INCH REVOLVER COVER	1
32	GP0000001397	21011005483246A	10 INCH REVOLVER ASSEMBLY	1
33	GP0000001398	2101100535A	10 INCH RING GEAR	2
34	GP0000001399	3011301010	SELF-TAPPING SCREWS	21
35	GP0000001400	21011005510001A	10-INCH DUST-PROOF WHEEL COVER	2
36	GP0000001401	21011005590001A	10 INCH RIGHT WHEEL COVER	1
37	GP0000001402	21011005573246A	10 INCH RIGHT WHEEL ASSEMBLY	1
38	GP0000001403	2106201186A	LINK	1
39	2109100013N	2109100013N	O-RING	1
40	GP0000001273	21031000230001D	CLEANING THE JOINT	1
41	GP0000001404	21032003800126A	LAWN MOWER	1
42	3032306001	3032306001	ALL METAL HEXAGONAL FLANGE LOCK NUTS	6
43	GP0000001275	21061001354017B	GEAR PLATE	1
44	GP0000001405	3021302003	MACHINE SCREW	2
45	GP0000001406	3043301001	OPEN RETAINING RING	4
46	2104400013E	2104400013E	LEFT OUTPUT GEAR ASSEMBLY	1

47	A26800705102	A26800705102	FLAT GASKET	2
48	GP0000001407	3021302004	MACHINE SCREW	4
49	GP0000001277	21011004420120B	REAR AXLE SLEEVE	2
50	A26809000102	A26809000102	CYLINDRICAL PIN	2
51	GP0000001408	2102300064A	GEARBOX ASSEMBLY	1
52	2104400014E	2104400014E	RIGHT OUTPUT GEAR ASSEMBLY	1
53	GP0000001409	3091308001	HEXAGON FLANGE BOLTS	2
54	GP0000001410	2102200035A	POSITIONING PLATE	1
55	GP0000001411	A26800618101	FIXING BOLTS	1
56	GP0000001412	2103200395A	LOCK BLOCK	1
57	GP0000001413	2103800011A	LOCK BLOCK TORSION SPRING	1
58	3043301003	3043301003	OPEN RETAINING RING	2
59	GP0000001414	2103300040A	LOCK BLOCK FIXED SHAFT	1
60	GP0000001415	2103200228A	SIDE ROW FIXING PLATE	1
61	GP0000001416	2103300052A	SIDE POSITIONING SHAFT	1
62	GP0000001417	3052301004	SPRING WASHER	2
63	GP0000001418	3021302002	MACHINE SCREW	2
64	GP0000001419	2109800066D	SIDE COVER TORSION SPRING	1
65	GP0000001420	21051000430001A	SIDE ROW COVER	1
66	GP0000001421	21041006190001E	SIDE PROTECTIVE COVER	1
67	GP0000001301	21041001160001A	LOCK BUTTON PRESSURE PLATE	1
68	2109800022C	2109800022C	SPRING	1
69	GP0000001422	21041001150318A	PLUG-IN LOCK BUTTON	1
70	GP0000001423	21061006900001A	BROKEN GRASS PLUGIN	1
71	GP0000001424	2101500271A	REAR AXLE ASSEMBLY	1
72	GP0000001278	A26800203001A	CROSS RECESSED PAN HEAD SCREWS	2
73	GP0000001425	2106100713A	HANDLE ASSEMBLY	1
74	GP0000001426	3021301002	COUNTERSUNK SCREW	2
75	GP0000001427	21061007123249A	HEIGHT ADJUSTMENT HANDLE ASSEMBLY	1
76	GP0000001428	3091307016	HEXAGON HEAD FLANGE BOLTS	4
77	GP0000001429	21063003450001A	ARMREST RIGHT BRACKET	1
78	3032306003	3032306003	HEXAGON FLANGE LOCK NUTS	4
79	GP0000001430	2109800237A	REAR COVER TORSION SPRING	1
80	GP0000001431	2106300041A	LONG POLE	1
81	GP0000001432	21002010150001A	REAR COVER PLATE	1
82	GP0000001433	3012301001	HEXAGON SOCKET PAN HEAD TAPPING SCREWS	3
83	GP0000001434	2109600031A	PLUG	3
84	GP0000001435	21063003440001A	ARMREST LEFT BRACKET	1
85	2109900066A	2109900066A	TRIANGLE SELF-TAPPING BOLT	1
86	GP0000001436	2109900067A	SPECIAL BOLT	2
87	GP0000001437	2109300146A	SQUARE GASKET	3
88	GP0000001438	2030100252B	GASOLINE ENGINE ASSEMBLY	1
89	GP0000001439	2106300314A	HEXAGON SPECIAL BOLTS	2
90	GP0000001440	2106300369A	ROUND HEAD SQUARE NECK BOLTS	2
91	GP0000001441	21061000020001B	LOWER ARMREST KNOB	2
92	GP0000001442	3031306002	HEX NUTS	4
93	GP0000001443	21062011450001A	LOWER HANDRAIL	1
94	GP0000001284	21061000013201A	WIRE CLIP	1
95	GP0000001444	21061007160318A	LOCK THE HANDLE	2

96	GP0000001445	21093001645007A	CYLINDRICAL PIN	2
97	GP0000001446	2102200018N	LARGE WASHERS	2
98	GP0000001447	21061007205007A	TIGHTEN THE HANDLE BOLT	2
99	GP0000001448	21061007170318A	LOCKING CAP	2
100	3091307003	3091307003	HEXAGON FLANGE BOLTS	1
101	GP0000001449	2106300328A	HOOK	1
102	GP0000001370	3051303003	FLAT WASHERS	3
103	GP0000001450	3052301003	SPRING WASHER	1
104	GP0000001287	A26800501603A	CAP NUT	3
105	GP0000001288	21061000043201A	CABLE FIXING BLOCK	1
106	GP0000001451	2106800742A	FLAMEOUT CABLE ASSEMBLY	1
107	GP0000001452	2106800727A	DRIVE CABLE ASSEMBLY	1
108	GP0000001453	3091307024	HEXAGON FLANGE BOLTS	1
109	GP0000001358	3091307017	HEXAGON HEAD FLANGE BOLTS	1
110	GP0000001454	21061007214017A	GEAR BOX UPPER COVER	1
111	GP0000001455	2106201162A	SHIFT KNOB	1
112	GP0000001456	21061001330318N	MULTI-LEVEL SELF-PROPELLED ADJUSTMENT HANDLE	1
113	GP0000001457	21061001340318N	UNDER THE MULTI-LEVEL SELF-PROPELLED ADJUSTMENT HANDLE	1
114	GP0000001458	2109600034A	DAMPING BUSH	1
115	GP0000001459	21061007320001A	SHIFT PAD	1
116	GP0000001460	2109800234A	GEAR SPRING	1
117	GP0000001461	2106201169A	GEAR SLIDING SLEEVE	1
118	GP0000001462	21061007220001A	GEAR BOX LOWER COVER	1
119	GP0000001463	2106800746A	TRANSMISSION CABLE ASSEMBLY	1
120	GP0000001289	21061001113201N	CURVED GASKET	2
121	GP0000001290	21061007140001A	TIE ROD BRACKET	2
122	GP0000001464	2106800720A	LEFT RIGHT TORSION SPRING	1
123	GP0000001465	21061007150001A	SELF-PROPELLED CABLE HANGING BLOCK	4
124	GP0000001292	21061007290001A	TIE ROD BRACKET COVER	2
125	GP0000001466	2106800721A	RIGHT LEFT-HANDED TORSION SPRING	1
126	GP0000001467	21062011470001A	UPPER ARMREST	1
127	GP0000001468	2106600017N	ARMREST SHEATH	1
128	GP0000001469	3021302005	MACHINE SCREW	4
129	GP0000001470	21062011510318A	FLAMEOUT LEVER	1
130	GP0000001471	21061007180001A	PULL ROD GUSSET	2
131	GP0000001472	21062011520318A	DRIVE ROD	1
132	GP0000001473	21071001300001A	SET STRAW BASKET HANDLE	1
133	GP0000001474	21071001080318A	WINDSHIELD	1
134	GP0000001475	21071001290001A	STRAW BASKET	1
135	GP0000001476	2107200116A	GRASS BAG HOLDER	1
136	GP0000001477	2109200040A	COMPRESSION PIECE	4
137	GP0000001349	3011301004	SELF-TAPPING SCREWS	1
138	GP0000001478	21077001482231A	GRASS BAG	1
139	GP0000001479	21002010160001A	REAR COVER	1
140	GP0000001480	2012200002A	SOCKET WRENCH	1
141	2012100004A	2012100004A	SOCKET WRENCH ROD	1